

## Hands Free Dispenser Foot Switch Install & Operation Manual

### Dispense options

Chilled & Ambient  
Chilled, Ambient & Hot  
Chilled, Ambient &  
Sparkling  
Chilled, Hot & Sparkling



Chilled



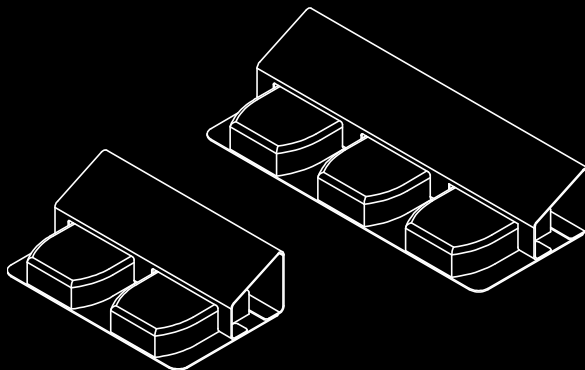
Ambient



Hot



Sparkling



Telephone  
+44 (0)1362 695 006  
Email  
[sales@borgandoverstrom.com](mailto:sales@borgandoverstrom.com)

[borgandoverstrom.com](http://borgandoverstrom.com)

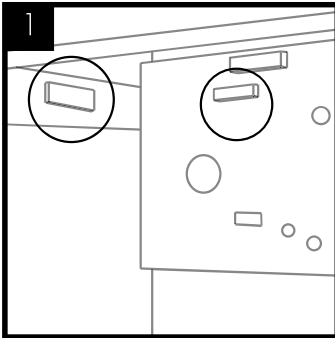
Synergy House  
Fakenham Road  
Morton On The Hill  
NR9 5SP

## Installation

### Installation of the 2-way/3-way Foot Pedal Switch in the b4.2 & b3.2 Model

*Images below illustrate a 3-way Foot Pedal Switch*

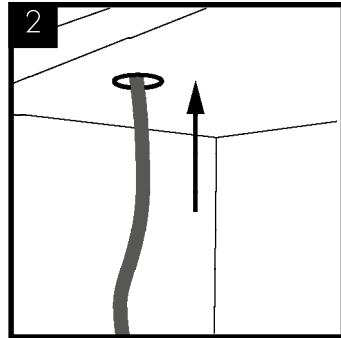
**Note:** Ensure electrical power is disconnected before carrying out any remedial work.



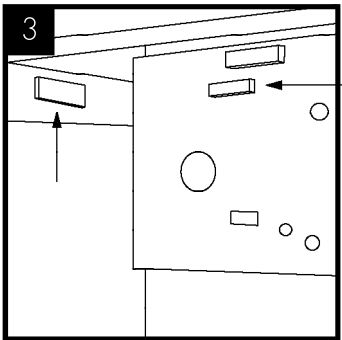
Remove the top and right-side panel (b4).

Remove the top, front and lower (b3).

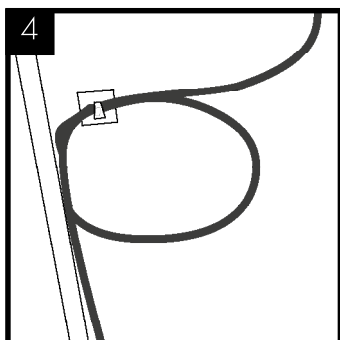
Disconnect the signal wiring loom (circled) from the Touch Panel PCB and main PCB and discard.



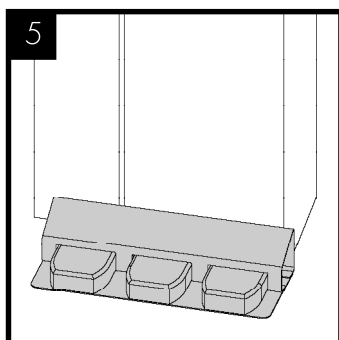
Feed the new wiring loom up.



Connect the wiring loom onto both the Touch Panel PCB and Main PCB. (If a hot machine, ensure the wiring loom is not close to the tank itself).



Neatly cable tie up the wiring loom and attach to a self-adhesive clip on the inner side panel.



Refit all panels and feed the wiring loom from underneath the door panel and position in front of the machine.

Select your icons relevant to your machine and stick onto the footplate using the template supplied.

Installation is now complete.