

1 x Base cabinet silver or black
2 x floor brackets
4 x Unit mounting screws

Kit content includes:

Item no. 720225 & 720230

Base Cabinet Instructions

e4/e6

For how-to-install video visit:

www.borgandoverstrom.com/support/how-to-videos/



Customer services:

support@borgandoverstrom.com

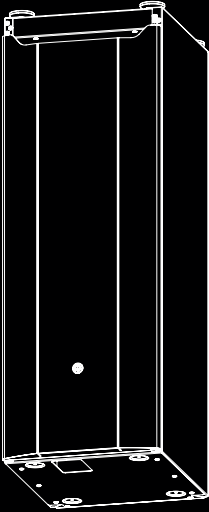
call +44 (0)1362 695 006

Telephone
+44 (0)1362 695 006
Email
sales@borgandoverstrom.com

borgandoverstrom.com

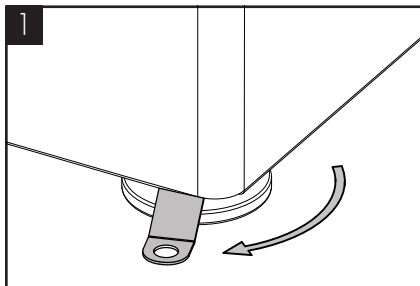
© Copyright Borg & Overström
This guide is printed by Borg & Overström and
shall not be reproduced or copied in anyway.

Document ref: 702278
Version: 03

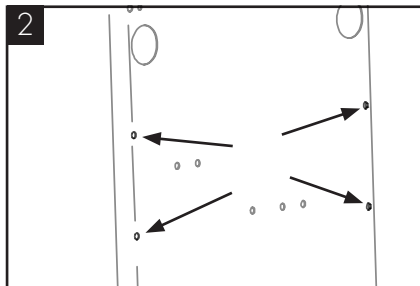


Step-by-step Installation Instructions

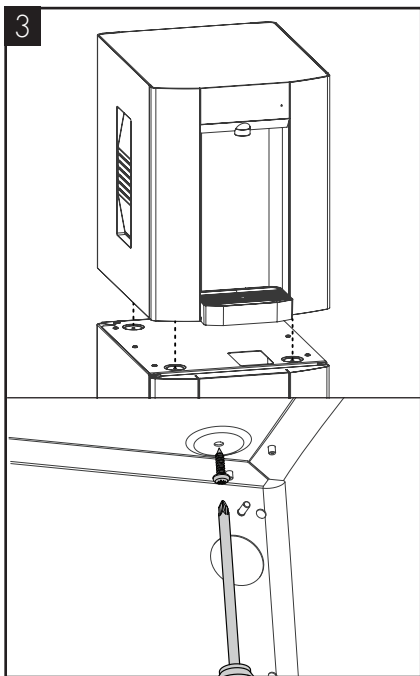
The base cabinet is designed with the e4/e6 unit, alarmed drain kit and optional drain accessories.



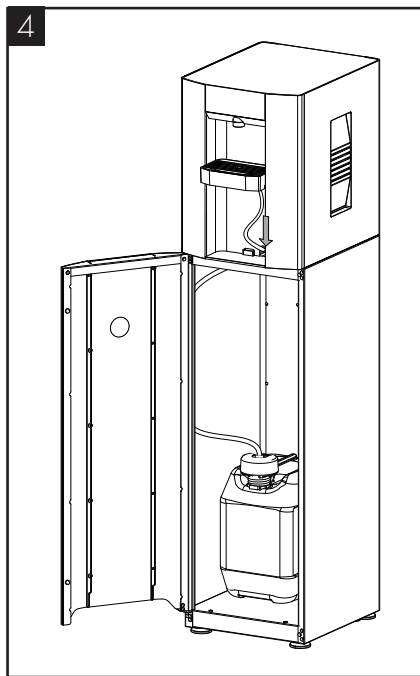
Remove the rear feet and fit the brackets as provided onto them and refit. Adjust the level of the unit by winding or unwinding the feet. Once the base cabinet is in the suitable position fix the brackets into place through the floor.



If it is more practical to mount the unit to a wall use the optional wall bracket set (194107) with the holes on the back of the cabinet.



Place the unit on the base cabinet in the feet indents on the top of the cabinet. To secure the unit to the base cabinet use the four screws provided. Fix through from the inside of the base cabinet up in to the feet of the unit.



To fit the optional drain kits remove the original drip tray and feed the pipe, fitted on the new drip tray, through the hole in the e4/e6 unit and base cabinet. Feed the pipe down the left hand side of the cabinet and fit to optional Bluetooth Alarmed Waste Kit (720400) or to an external drain.