

## E4

---

### Dispense Options



Chilled



Sparkling



Ambient

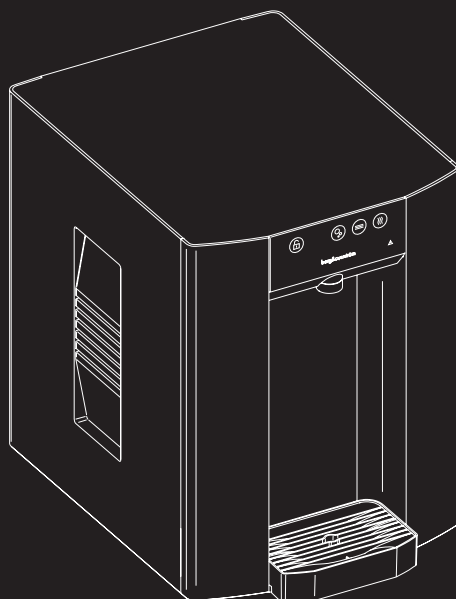


Hot

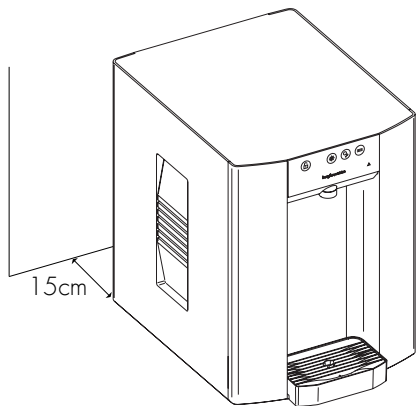
---

### Contents

- Component/Feature Overview
- Operation
- Functions & Controls
- General Safety
- CO2 Bottle Installation
- Fault Finding



# General Safety



- Always place the dispenser in its vertical position, on a surface which can capably support its weight.
- During use this machine must remain in its upright position.
- Allow 15cm clearance minimum behind the unit.
- Keep the machine away from sunlight, heat and moisture.
- The environment where this machine is installed must be free of dust corrosive and explosive gases.



## Basic Troubleshooting

Problem/Report	Possible Cause	Suggested Action
No water dispensing	Water supply turned off	Check that power supply, and all taps/ valves/ filters on the incoming water supply are fitted and are turned on
	Leak detection in unit triggered	Disconnect the power and water supply, check for leaks.
	Faulty water pressure regulator, or other failure	Contact your distributor
	Hot tank dry start	Check on heater connections and water supply
	Waste kit full	Empty level sensor tank
No/low sparkling water	No/incorrect CO <sub>2</sub> pressure	Check CO <sub>2</sub> bottle, regulator and non-return valve. Replace as necessary
	Carbonator tank not filling	Contact your distributor
Warm drinks	Insufficient cooling air flow through the fridge	Contact your distributor
	Faulty compressor, or other failure	
Water lying on top edge of lower door panel and/or bottom of cabinet.	Overflowing drip tray waste container	Empty waste container and check drainpipe is not blocked
Water lying in bottom of machine	Leak in pipe work and/ or filter	Contact your distributor
Bleeping noise	Level sensor fitted and tank full	Empty level sensor tank
Not heating	Hot tank switch off	Check water is dispensing from hot then turn switch on back of unit

Refer to instruction manual for full fault codes and diagnostics.

This appliance can be used by children aged from 8 years and above and persons with reduced physical, sensory or mental capabilities or lack of experience and knowledge if they have been given supervision or instruction concerning use of the appliance in a safe way and understand the hazards involved. Children shall not play with the appliance. Cleaning and user maintenance shall not be made by children without supervision.

The unit should be isolated from the electricity supply before removal of any covers. Great care must be employed when working with high pressure carbon dioxide, and in no cases should the maximum operating pressure of 0.4MPa (4 bar) be exceeded.

- The appliance is not suitable for installation in an area where a water jet could be used.
- The appliance has to be placed in a horizontal position.

**WARNING:** Keep ventilation openings in the appliance enclosure or in the built-in structure clear of obstruction.

**WARNING:** When positioning the appliance, ensure the supply cord is not trapped or damaged.

**WARNING:** Do not locate multiple portable socket-outlets or portable power supplies at the rear of the appliance

This appliance is intended to be used in household and similar applications such as:

- Staff kitchen areas in shops, offices and other working environments
- Farm houses and by clients in hotels, motels and other residential type environments
- Bed and breakfast type environments
- Catering and similar non-retail applications

A-weighted emission sound pressure level is below 70 dB(A)

## Waste Electrical Products

- The WEEE symbol indicates that this item contains electronic components which must be collected and disposed of separately.
- Never dispose of electrical waste in general municipal waste. Collect and dispose of such waste separately.
- Make use of the return and collection systems available to you, or your local recycling programme. Contact your local authority or place of purchase to find out what schemes are available.
- Electrical and electronic equipment contains hazardous substances which, when disposed of incorrectly, may leak into the ground. This can contribute to soil and water pollution which is hazardous to human health; and endangers wildlife.
- It is essential that consumers look to re-use or recycle electrical or electronic waste to avoid it going to landfill sites or incineration without treatment.



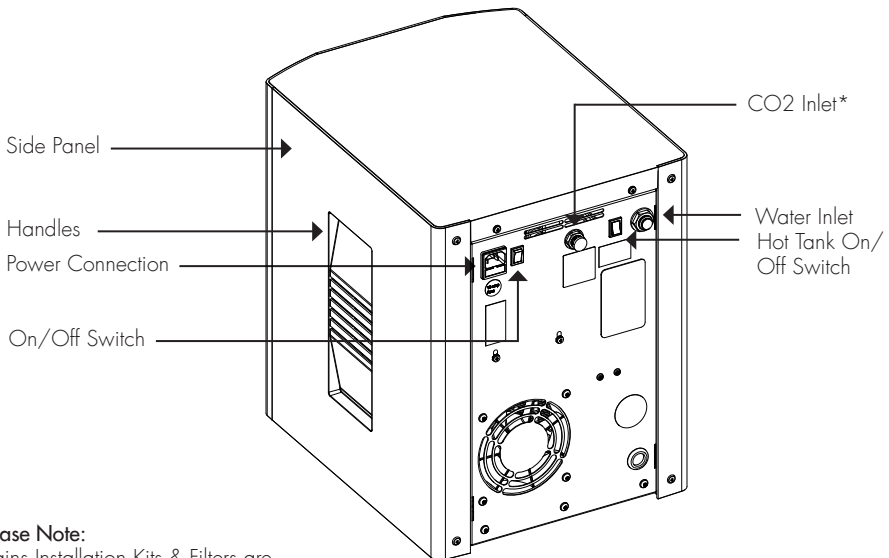
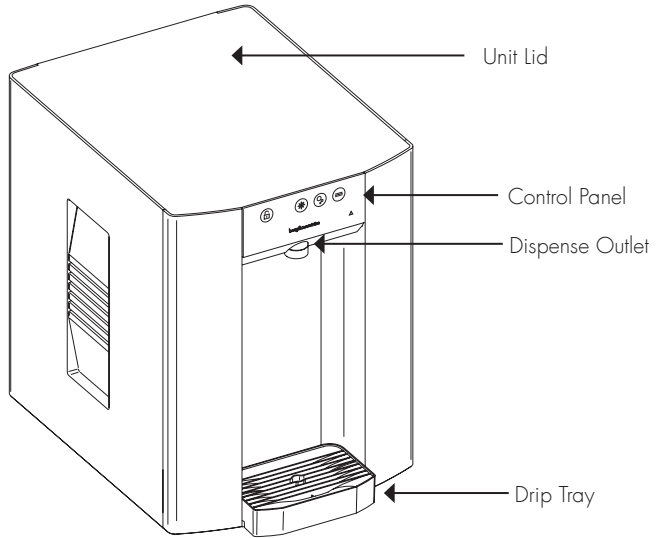
R290/R600a

R290/R600a is a refrigerant-grade propane used on a wide range of commercial refrigeration and air conditioning units. A highly pure propane, it has a low environmental impact and nominal global warming potential (GWP), meaning it possesses no qualities that can destroy the ozone layer. R290/R600a also is the preferred hydrocarbon alternative of the Environmental Protection Agency (EPA), substituting more harmful fluorocarbon refrigerants like R22, R134a, R404a and R502. **Units with R290/R600a can only be maintained and repaired by authorized technicians who are properly trained and certified.**

# Component/Feature Overview

## E4 Major Components

Contents: 1x E4 Unit, 1x Power Cord Set, 1x Warranty Card

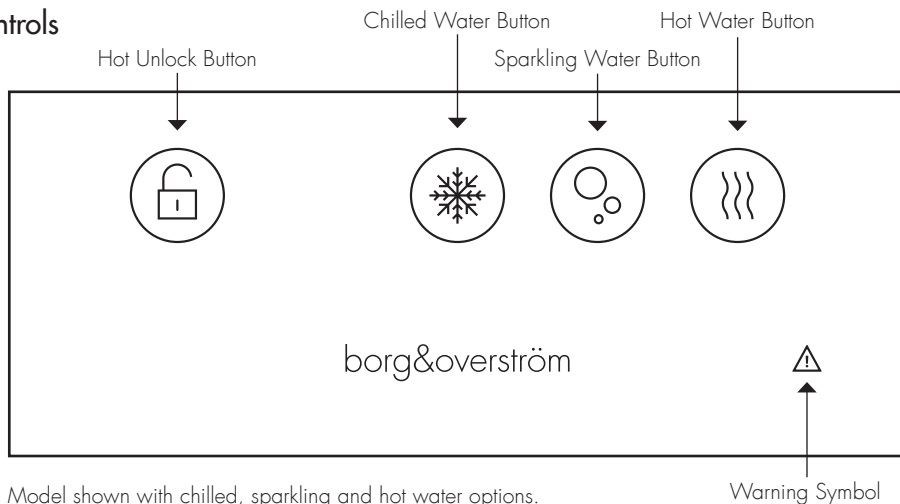


**Please Note:**  
Mains Installation Kits & Filters are supplied as extra items according to individual ordering requirement.

\*Sparkling versions only

# Functions & Controls

## Controls



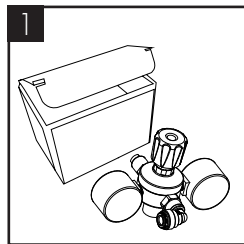
Model shown with chilled, sparkling and hot water options.

## How to Use

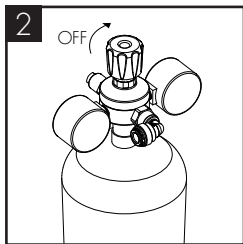
- To dispense water press desired water option and hold. Release to finish dispensing.
- For hot press unlock then hold hot button.

**Warning Symbol:** 'Warning triangle' will illuminate and flash when fault is present. Fault code can be identified by flash sequence.

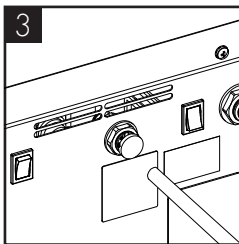
## CO2 Bottle Installation - Sparkling Water Model Only



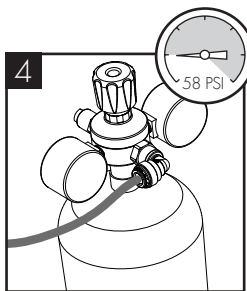
Unpack CO<sub>2</sub> Regulator and fit elbow fitting to spigot outlet.



Attach the regulator to the CO<sub>2</sub> bottle, ensuring the small pressure relief vent in the stem is facing away from you or anyone else. Ensure the regulator is closed. Hand tighten securely.



Connect the assembled CO<sub>2</sub> bottle and regulator to the CO<sub>2</sub> inlet using a 1/4" pipe.



Stand the cylinder in a suitable place. We recommend between 3.5 - 4 bar (58 PSI) (max). Do not exceed 4 bar pressure.

# Installation Requirements

Identify a suitable location for the E4 unit. It should be positioned within 2.0m of suitable services connections. Allow 15cm of free space at the rear for ventilation.

The E4 unit must be installed in accordance with the relevant requirements of:

- The appropriate building regulations by application of either The Building Regulations (England and Wales), The Building Regulations (Scotland) or The Building Regulations (Northern Ireland). In territories other than those listed the local regulations in force must be complied with.
- The Water Supply (Water Fittings) Regulations (England, Wales and Northern Ireland) or The Water Bye-laws in Scotland.
- The unit must not be installed where it is liable to freeze. If the unit is thought to be frozen it must not be switched on. It should be allowed to thaw and must then be thoroughly inspected to ensure it is undamaged.

**Water:** Mains potable water – fit pressure reducing valve max 3 bar (2 bar recommended)

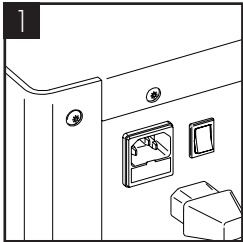
**Ambient room operating temperature:**  
Min 5°C - Max 35°C

**CO<sub>2</sub>:** Food Grade CO<sub>2</sub> to be supplied

**Mains pressure:** Min 0.05MPa (0.5 bar) dynamic

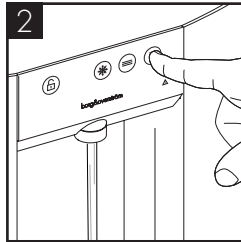
**Electricity:** 10A supply – Earth Leakage Protected

## Hot tank commissioning mode - Hot Water Model Only

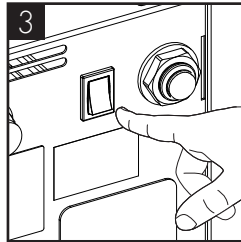


Connect the unit to the electricity supply and ensure unit is switched on.

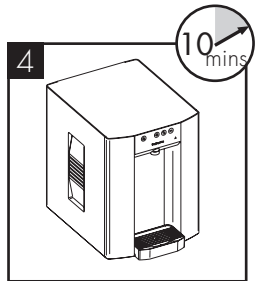
Check hot switch is off.



The hot versions switch will be off on delivery. Dispense from unit to ensure tank is full.



Then switch on the hot tank using the hot switch.



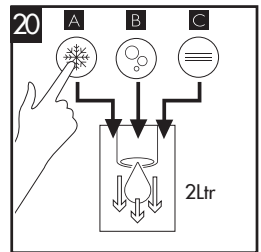
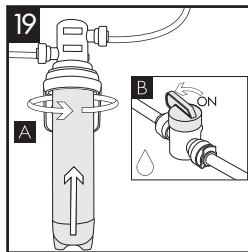
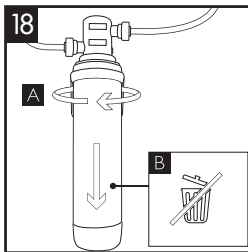
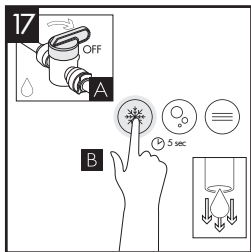
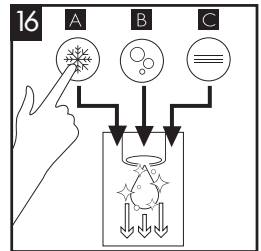
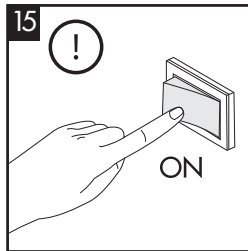
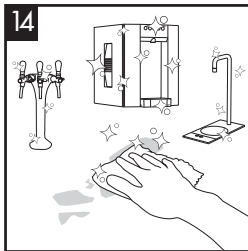
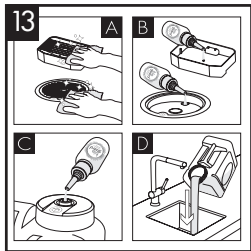
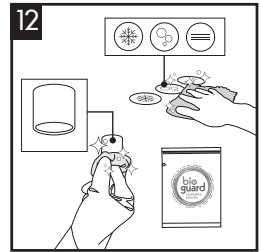
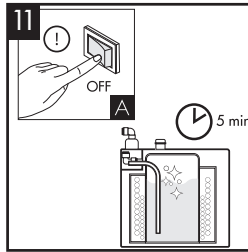
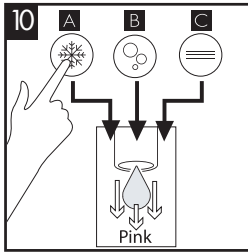
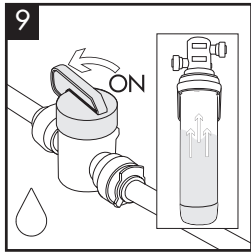
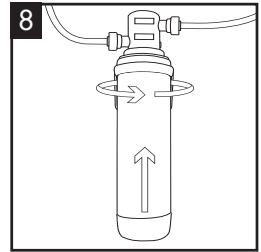
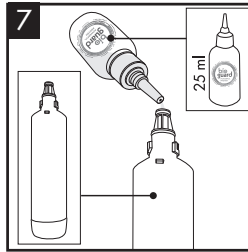
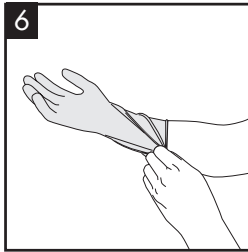
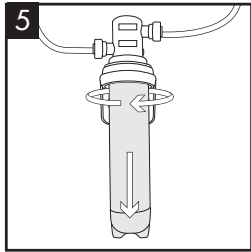
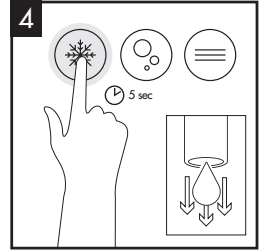
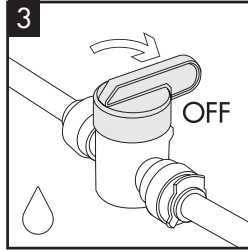
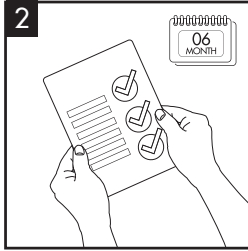
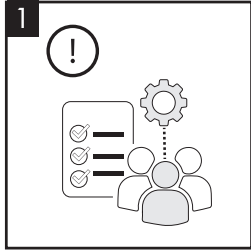
Allow the machine to stand for 10 minutes for the initial chilling and heating process to complete.

## Connectivity

- Download and connect the Borg and Overström App for Bluetooth® touchless dispense.
- Connect a Bluetooth® alarmed waste kit for drainless-overflow protection.
- Connect a SenorBeam foot-switch for touchless foot operation dispense.

# Sanitisation Guide

To be completed by a technician or service provider at regular 6 month intervals.



For full distributor  
service manual visit:

[www.borgandoverstrom.com/manual/e4](http://www.borgandoverstrom.com/manual/e4)



Customer services:  
[aftersales@borgandoverstrom.com](mailto:aftersales@borgandoverstrom.com)  
call +44 1362 695 006

Telephone  
+44 (0)1362 695 006  
Email  
[sales@borgandoverstrom.com](mailto:sales@borgandoverstrom.com)

[borgandoverstrom.com](http://borgandoverstrom.com)

© Copyright Borg & Overström.  
This guide is printed by Borg & Overström and  
shall not be reproduced or copied in anyway.

Ref: 702581  
Version: 03