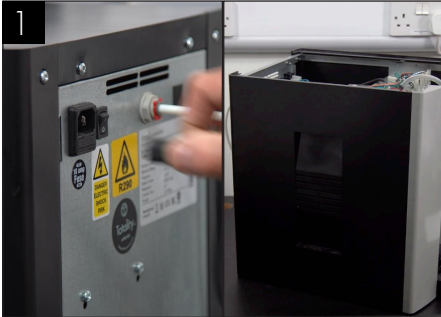


# Compressor Control Board Installation Instructions

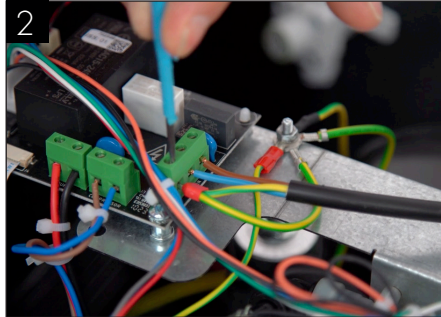


You will need a compressor control board kit containing:

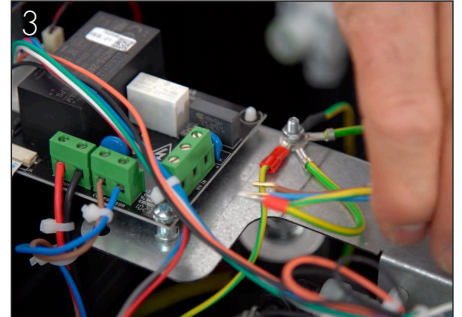
- Compressor control board
- M4 screw
- Washer
- Cable ties
- Link cable
- Label 'Compressor control board fitted'
- Instructions sheet.



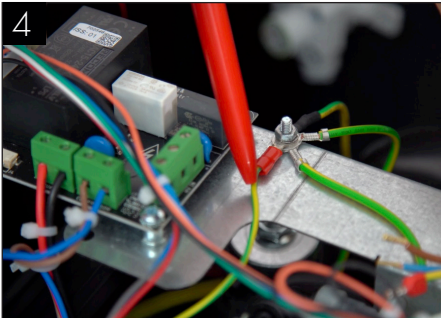
1 Disconnect power to the unit from the mains and remove the top panel.



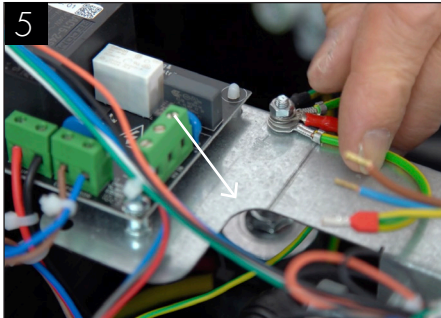
2 Disconnect the incoming power cables from the terminal block by unscrewing the flat-head screws, releasing the Live, Neutral and Earth connections.



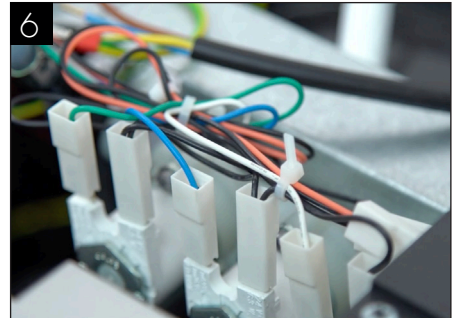
3 Pull the Live, Neutral and Earth wires free from the terminal block.



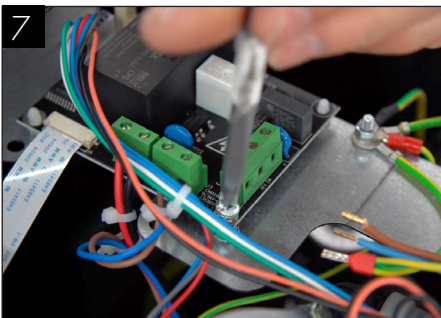
4 Ensure no earth cables will cross under or over the new board position. Release from earth stud and re-route accordingly.  
Eg: for the example highlighted, re-route the cable underneath the metal mounting plate



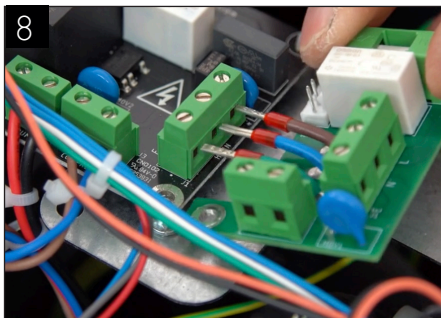
5 Rotate other nearby Earth cables so they are away from the board. Re-connect Earth cables to Earth stud and replace the washer and nut, fully tightening the nut securely.



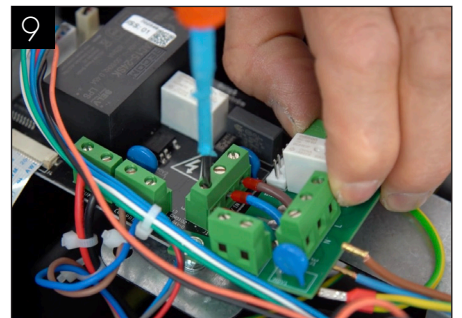
6 Any unused solenoid connections should be ziptied together to keep them clear of the board.



7 Remove the existing fixing screw from the front right of the main board.

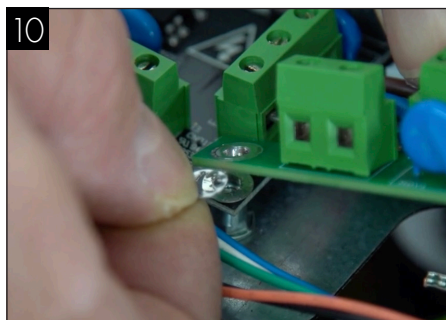


8 Take the compressor control board and slide its three wires into the original power terminal.

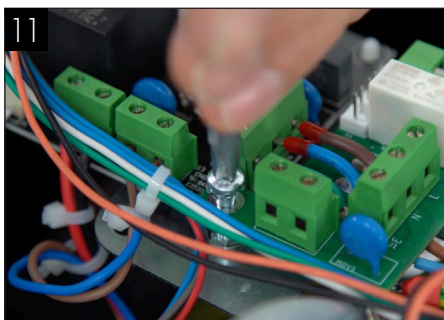


9 Screw the terminal block connections back down to secure the new wires in place.

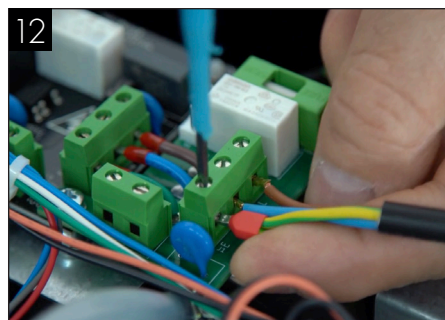




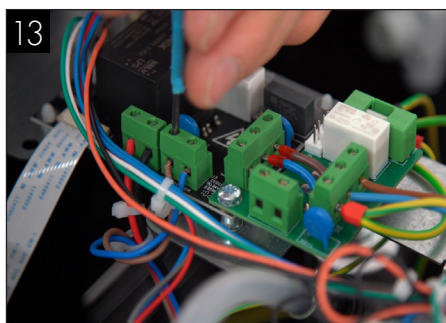
Place the washer between the fixing holes on the two boards.



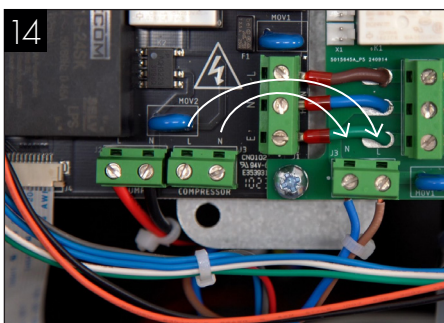
Secure the two boards to the chassis using the longer screw in your kit.



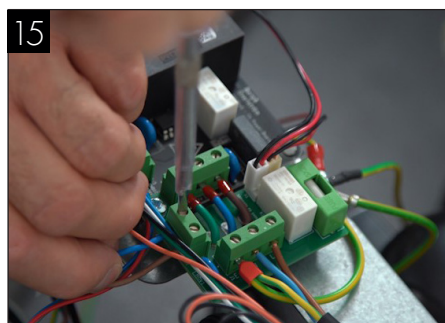
Refit the existing incoming power wires to the new compressor control board. Tighten with a screwdriver, ensuring the wires are fully inserted and are the correct way round, mirroring the opposite terminal.



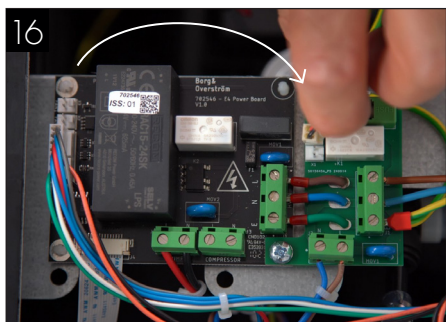
Unscrew and release the compressor power leads from the main board terminal.



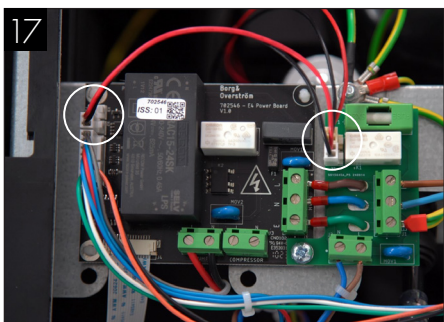
Place the now released, Live and Neutral compressor power wires into the terminal on the compressor control board, ensuring correct placement of Neutral and Live wires as indicated on the board.



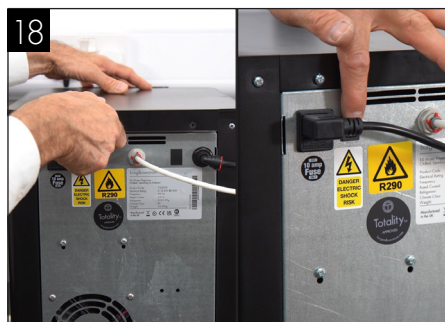
Screw down the compressor power wires to secure into the new terminal on the compressor control board. The original power connection should now be unpopulated.



Remove the fan power cable from the top left of the main board and reattach to the top pins on the compressor control board.



Connect the link cable between the bottom two pins on the compressor control board and the two pins labelled **Fan 2/Fan** (Revision 1 Board) Fan (Revision 2 Board) on the main board.



Re-install the top panel. Reconnect and power on the unit. You should be able to hear the compressor and fan running.



Affix label to reverse of dispenser, located below the rating plate as shown, to indicate that the compressor control board is fitted.



Test all dispense options to check everything is functioning correctly. Allow 8-10 minutes for the DryChill® block to reach temperature.



Scan to watch  
Compressor  
Control Board  
Installation video